

**INTRODUCTION**

**myPCProbe** is a temperature or temperature and humidity sensor which connects to a PC via a USB port. From hobbyists to scientists, from simple technical tasks to complex engineering activities, **myPCProbe** can be an invaluable tool for on-line monitoring and data logging in school, laboratory research, machine data recording and industrial understanding.

It comes with an intuitive and easy-to-use Windows software which plots and records data, shows gauges, bargraphs and digital readouts. The USB port is accessed as a virtual serial port which makes **myPCProbe** compatible with any SCADA softwares with Modbus RTU driver or with any program with ASCII serial communication. Multiple units of **myPCProbe** can be connected to the same computer.

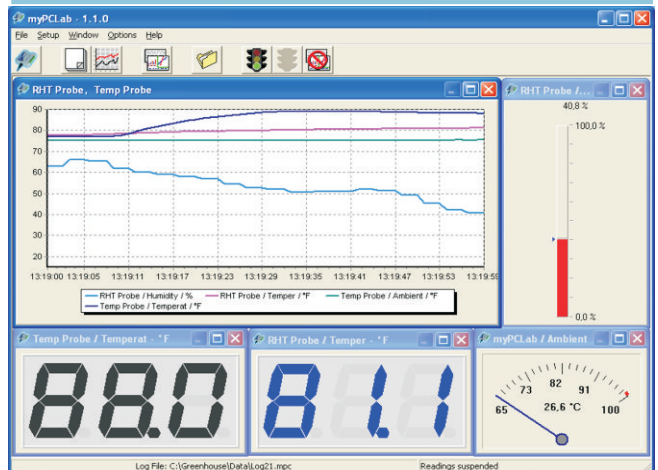


**CHARACTERISTICS & SPECIFICATIONS**

- **myPCProbe-RHT:** For temperature and humidity measurements from -20 to +100°C and 0 to 100 %RH (also available as dew point).
  - Accuracy: refer to diagram.
  - Sampling rate: one sample every 1 or 3 seconds, depending on the programmed resolution.
  - Response time: 4 s (RH) or 30 s (T) in fairly still air.
- **myPCProbe-TEMP:** For temperature measurements in different ranges, according to the specified sensor. Available for thermocouple types J, K, T, E, N, R, S and B and Pt100 RTD.
  - Internal temperature sensor for cold junction compensation or handle temperature monitoring.
  - Accuracy: 0.2% of full scale for Pt100; 0.25% of FS  $\pm 3^{\circ}\text{C}$  for thermocouples type R, S and B; 0.25%  $\pm 1^{\circ}\text{C}$  for all other thermocouples;  $\pm 1.5^{\circ}\text{C}$  for internal temperature sensor.
  - Sampling rate: 8 to 128 samples per second, depending on the A/D resolution.
  - A/D resolution: programmable from 15 to 11 bits, depending on the sampling rate.
  - Automatic cold junction compensation for thermocouples.
  - Cable resistance compensation for Pt100.
- Computer interface: USB V1.1 Plug and Play, Virtual Serial Port driver.
- USB connection: 1.5 m cable with Type-A USB plug.
- Double communication protocol: ASCII & Modbus RTU.
- Powered by the USB bus.
- Consumption: <100 mA.

- Free Windows software provides configuration, visualization, recording and data export. Provides simultaneous communication with multiple **myPCProbe** and **myPCLab** devices.
- Data export formats: txt, xls, rtf, pdf, html, xml, dbf, csv.
- Compatible with Windows 2000, XP and up.
- Custom, multipoint calibration capability to increase system accuracy.
- Operating environment (handle): 0 to 60°C, 10 to 90% relative humidity, non-condensing.
- ABS handle.

**SOFTWARE**



**Measuring Accuracy and Sensor Operational Limits (myPCProbe-RHT)**

