

INTRODUCTION

Logbox-DA is a dual input data logger which accepts digital signals in one channel and analog voltage or current signals in the other channel.

Typical applications are fluid flow and pressure monitoring when connected to pulsed signal flowmeters and linear output pressure transmitters.

Wireless communication and data transfer can be easily achieved between **LogBox** and a Palm PDA or to a PC via the handy infrared **IR-LINK 3** connected to a USB port.

Its sturdy water proof enclosure provides full performance in the most demanding applications.



CONFIGURATION

- **LogChart II** software allows for logger configuration, recorded data retrieval, plotting and historical analysis and exports data to spread sheets.
- Infrared communication to a PC is achieved by using the interface **IrLink3** connected to a USB port (RS232 is optional).
- Configuration, data retrieval and analysis can be also done by using a convenient Palm OS compatible PDA through its **IrDA** interface. This reduces cost and dramatically increases portability.
- Data downloaded from multiple **LogBox** units to a Palm can be later transferred and synchronized to a PC by means of the native Palm sync tool.
- Once the data are transferred to a PC they can then be better visualized and exported by the **LogChart II** software.

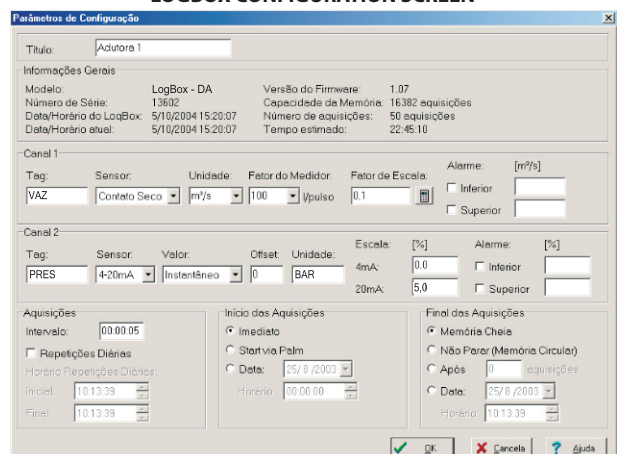
SPECIFICATIONS

- Input 1: voltage pulse signal (NPN or PNP up to 4 KHz) or dry contact (up to 20 Hz)
- Input 2: 0 to 20 mA, 4-20 mA, 0 to 10V or 0 to 50 mV, internally selectable
- Input 2 resolution: 13 bits
- Input 2 accuracy: 0.2% of input full scale
- Counting interval and scale factor for input are fully programmable
- Launch options: immediate, programmed time and date, or via Palm
- Stop options: when full, at a certain time, after a number of readings, or wrap around (overwrites first readings)
- Data acquisitions can be repeated daily
- Memory for 32,000 recordings in one channel or 16,000 recordings for each channel
- Infrared communication up to 1 meter away
- Recording interval: programmable from 1 s to 18 hours
- Real time clock
- Internal replaceable lithium cell (3.6V 1/2 AA)
- Estimated battery life: 200 days with one weekly download and 5 minutes measuring interval. Battery life depends heavily on data retrieval frequency.
- Configuration and data retrieval software for Windows® XP, Vista, 7 and PalmOS.
- Operating temperature: -40°C a 70°C
- ABS enclosure with IP65 protection (IP67 under request)
- Dimensions: 70 x 60 x 35 mm

DATA ACQUISITION, LOGGING & SUPERVISORY SYSTEMS



LOGBOX CONFIGURATION SCREEN



ANÁLISE DE DADOS

CONFIGURATION

Parameters Configuration

Title: Logbox DA

General Information
 Model: LogBox DA Firmware Version: 1.03
 Serial Number: 1246 Memory Capacity: 16382 loggings
 LogBox Date/Hour: 22/7/2005 19:41:00 Number of acquisitions: 5 loggings
 Actual Date/Hour: 22/7/2005 16:38:14

Acquisitions | Channels

Period: 00:00:01 Daily Repetition
 External Battery Switch: 1.0 s Start Time: 10:13:39
 Total Acquisition Time: Not defined Stop Time: 10:13:39

Start Logging
 Immediately
 Start via Palm
 Day: 25/8/2003
 Hour: 00:00:00

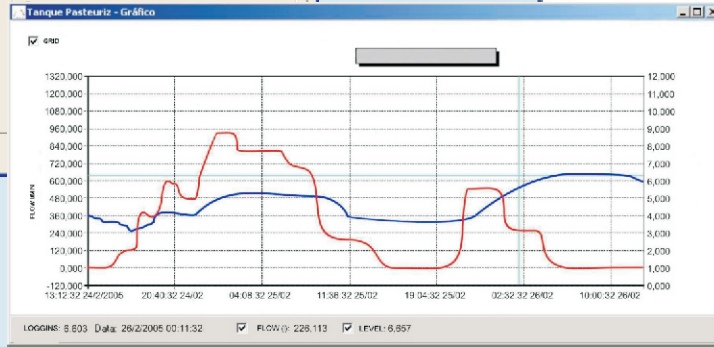
Stop Logging

TABLE

Declar A4.ich - Loggings Table

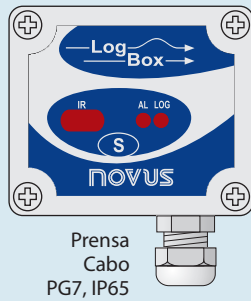
Logging Nr.	Time	Data	Temp T (°C)	Data 18 % (°C)
00001	19:00:09	31/1/2008	26,1	59,7
00002	19:00:09	31/1/2008	25,7	60,8
00003	20:00:09	31/1/2008	25,2	62,6
00004	21:00:09	31/1/2008	24,9	64,2
00005	22:00:09	31/1/2008	24,7	65,4
00006	23:00:09	31/1/2008	24,5	66,4
00007	00:00:09	1/2/2008	24,4	67,0
00008	01:00:09	1/2/2008	24,2	67,1
00009	02:00:09	1/2/2008	24,2	67,2
00010	03:00:09	1/2/2008	24,1	68,2
00011	04:00:09	1/2/2008	24,0	69,8
00012	05:00:09	1/2/2008	23,9	70,6
00013	06:00:09	1/2/2008	23,8	70,3
00014	07:00:09	1/2/2008	23,8	69,9
00015	08:00:09	1/2/2008	23,9	73,3
00016	09:00:09	1/2/2008	24,4	76,0
00017	10:00:09	1/2/2008	25,3	71,3
00018	11:00:09	1/2/2008	25,9	62,7
			27,0	59,2
			27,3	59,1
			27,2	58,1
			27,3	63,7
			27,6	61,4
			27,7	59,2
			27,1	60,7
			26,9	61,4
			26,9	62,1
			26,3	63,6
			26,1	64,9
			25,9	65,9
			25,8	66,3

GRAPH

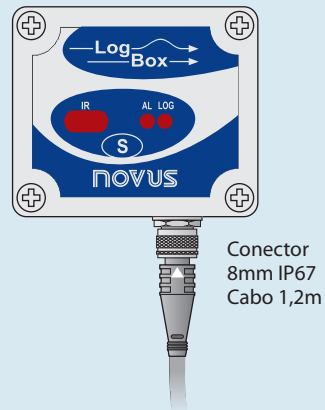


MODELS

Versão Standard



Versão IP67



DIMENSION

