

Highlights

- Wide temperature range from -18 to 2000°C
- Simple, two-wire installation for simultaneous 4-20 mA and digital output
- Wide choice of optics
- Special models for glass and plastics applications
- Rugged accessories for harsh industrial environments
- Optional stainless steel versions
- Advanced signal processing
- Install up to 15 sensors on a single multidrop network
- Windows software for remote configuration and monitoring
- For use in potentially explosive atmospheres with intrinsically-safe ratings for dust and gas

TX Datasheet



Electrical Specifications

Outputs

Analog	4-20 mA, max. loop resistance 700 Ω
Digital (Smart models)	HART® to RS232 (with optional adapter)
Alarm (Smart models)	24 V / 150 mA; adjustable setpoints, deadband, normally open/closed settings

Power Supply

12 - 24 VDC ±20% (Standard models)
24 VDC ±10% (Smart models)

General Specifications

Environmental Rating IP65 (IEC529)

Ambient Temperature

without cooling	0 to 70°C
with air cooling	up to 120°C
with water cooling	up to 175°C
with ThermoJacket™	up to 315°C

Storage Temperature -18 to 85°C

Relative Humidity 10 to 95%, non-condensing

Shock IEC 68-2-27, 50 G, 11 ms, any axis

Vibration IEC 68-2-27, 3 G, any axis, 11 – 200 Hz

Dimension
with cooling jacket 187 mm L x 42 mm diameter
187 mm L x 60 mm diameter

Weight
with cooling jacket 330 g
595 g

Measurement Specifications

Temperature/Spectral Ranges

LT/LTP (Low Temp.)	-18 to 500°C	8 to 14 μm
MT (Medium Temp.)	200 to 1000°C	3,9 μm
HT (High Temp.)	500 to 2000°C	2,2 μm
G5 (Glass)	250 to 1650°C	5,0 μm
P7 (Plastic)	10 to 360°C	7,9 μm

Optical Resolution¹

LT, MT, G5, P7	33 : 1
LTP	15 : 1 (Fresnel optics)
HT	60 : 1

System Accuracy ±1% or ±1,4°C^{2,3}

Repeatability ±0,5% or ±0,7°C³

Temperature Resolution

LT	0,1°C
all other models	1°C

System Response Time⁴

HT	100 ms
all other models	165 ms

Emissivity adjustable: 0,10 to 1,00

Signal Processing

Standard model	emissivity
Smart model	emissivity, °C/°F, advanced peak / valley hold, averaging, background radiation compensation

¹ 90% energy, standard focus optics

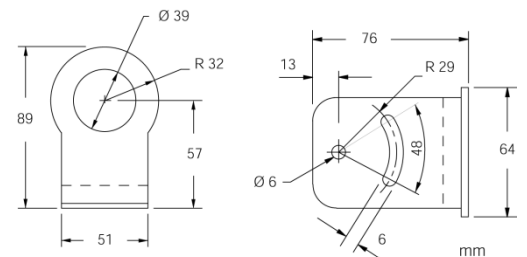
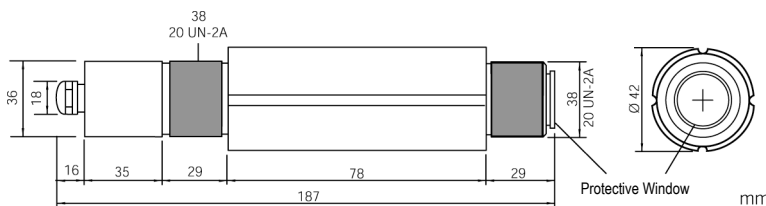
² at ambient temperature 23°C ± 5°C

³ whichever is greater

⁴ 95% value

Sensor and Fixed Bracket

Each sensor comes with a fixed bracket, a mounting nut, and an operator's manual. All models have 4 to 20 mA output.



Fixed Bracket (XXXTXACFB)

