

# MAXVU



The new MAXVU is a cost effective temperature controller which is fast to configure, has improved display visibility and reduces costs by minimising wiring and panel space.

## At-a-Glance

### Save Valuable Time - Set-Up in Under 60 Seconds

MAXVU has been specially designed for ease of use with a basic setup menu accessed from the front keypad.

- Includes 10 most common parameter settings
- Set-up in less than 60 sec for many applications
- Advanced set-up menu can also be accessed when needed

Alternatively fast configuration of multiple instruments can be achieved with the easy-to-use MAXVU PC Software.



### Improve Process Monitoring with a High Visibility Display

The high visibility display provides increased clarity and enables vital process information and alarm messages to be viewed at a glance, even from a distance.

MAXVU's impressive large digits create the largest active display area for any 1/16DIN (48x48mm) controller and is equally impressive on the larger 1/8DIN version (96 x48mm).

#### MAXVU16



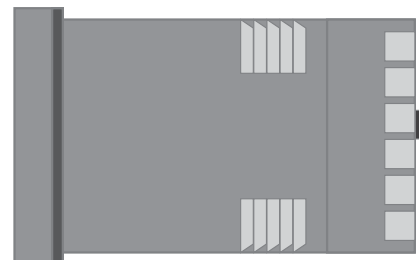
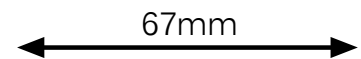
#### MAXVU8



### Reduce Space Required Behind-the-Panel

The short 67mm depth benefits installers by giving better access and reducing the panel depth required.

This results in MAXVU being easier to wire and quicker to install to save in overall costs.



# Key Features

## CONTROL

MAXVU:

- PID or ON-OFF control
- 'Heat' only or 'heat & cool' strategy
- 2 alarms (absolute, deviation, band, loop)
- Latching or non-latching alarm outputs
- 1 or 2 point calibration
- Ramp/dwell with delay time
- Reset to defaults

MAXVU E:

- Extrusion default settings
- Non-linear cooling
- Soft start

## INPUTS

- Thermocouple: B, C, J, K, L, N, R, S, T,
- RTD: PT100 2 or 3 wire,
- Linear ranges: 0/4 to 20mA, 0/1 to 5V, 0/2 to 10V (Not MAXVU E)

## OUTPUTS

2 or 3 outputs; relay or SSR

## COMMS

RS485 Modbus RTU  
Integral configuration port

## PROGRAMMING

Front keys or software programming

## FACIA & KEYPAD

3 tactile keys

## INDICATORS

- MAXVU: Output status
- MAXVU E: Heat, cool, alarm

## DISPLAY

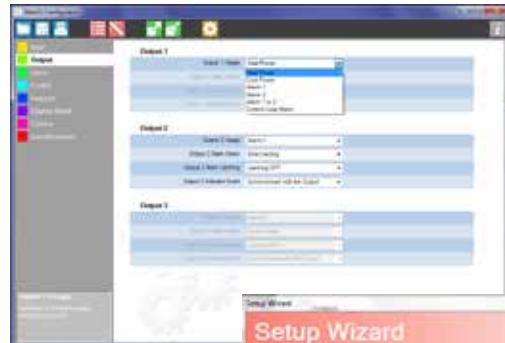
- 1/16 DIN: 18mm upper, 10.2mm lower
- 1/8 DIN: 18mm upper, 18mm lower



# MAXVU Configuration Software

Controllers can be programmed quickly using the dedicated PC configuration tool via MAXVU's integral configuration port.

- Logical menu driven interface
- Tables with dropdown menus
- Graphical setup wizard with informative help panel
- Save configuration files
- Print report of controller settings



## Ordering Code

<b>MV</b>	<b>16</b>	<b>0</b>	<b>M</b>	<b>AA0</b>	<b>0</b>	<b>2</b>	<b>1</b>	<b>U0</b>
<b>Format</b>	<b>Version</b>	<b>Supply Voltage</b>	<b>Communications</b>	<b>Output</b>				
16 1/16 DIN, 48 x 48mm 08 1/8 DIN, 96 x 48mm	0 Standard E Extrusion	M 110 to 240V AC L 24V AC / DC	0 Not Fitted C RS485 Communications	Out 1 Out 2 Out 3 AA0 SSR SSR None AR0 SSR Relay None RR0 Relay Relay None AAR SSR SSR Relay ARR SSR Relay Relay RRR Relay Relay Relay				

## Flexible for Use in a Range of Applications

MAXVU provides an affordable solution for applications needing essential temperature control.

### Packaging



### Heated Enclosures



### Food and Beverage



### Plastic & Rubber Extrusion



### General Heat Processes

